

Typification of the name *Allaeanthus kurzii* Hook. f. (Moraceae)

Gautam Kumar Upadhyay, Sunil Kumar Srivastava & Anis Ahmed Ansari

Abstract

UPADHYAY, G. K., S. K. SRIVASTAVA & A. A. ANSARI (2010). Typification of the name *Allaeanthus kurzii* Hook. f. (Moraceae). *Candollea* 65: 21-22. In English, English and French abstracts.

A lectotypification of the name *Allaeanthus kurzii* Hook. f. (Moraceae, tribe *Moreae*) (= *Broussonetia kurzii* (Hook. f.) Corner) is proposed. The lectotype specimen, *Griffith* (*Kew Distrib.* 4675), is kept at the Royal Botanic Gardens, Kew (K).

Key-words

MORACEAE – *Allaeanthus* – *Broussonetia* – Typification

Résumé

UPADHYAY, G. K., S. K. SRIVASTAVA & A. A. ANSARI (2010). Typification du nom *Allaeanthus kurzii* Hook. f. (Moraceae). *Candollea* 65: 21-22. En anglais, résumés anglais et français.

Le nom *Allaeanthus kurzii* Hook. f. (Moraceae, tribu des *Moreae*) (= *Broussonetia kurzii* (Hook. f.) Corner) est lectotypifié. Le spécimen choisi, *Griffith* (*Kew Distrib.* 4675), est conservé dans l'herbier des Jardins royaux de Kew (K).

Addresses of the authors: GKU & SKS: Central National Herbarium, Botanical Survey of India, Howrah 711 103, India.

Email: gautam_bsi123@rediffmail.com

AAA: Sikkim Himalayan Circle, Botanical Survey of India, Gangtok 737 103, Sikkim, India.

Submitted on August 13, 2008. Accepted on February 4, 2010.

Edited by P. Perret

Introduction

The genus *Allaeanthus* (*Moraceae*, tribe *Moreae*) was first described by THWAITES (1854), and was later reduced to a section of *Broussonetia* Vent. by CORNER (1962). BERG & al. (2006) accept the synonymization of *Allaeanthus* with *Broussonetia* but do not maintain the sectional treatment of CORNER (1962).

During the revision of the family *Moraceae* for the 'Flora of India' (excluding *Ficus* L.), the typification of the name *Allaeanthus kurzii* Hook. f. (\equiv *Broussonetia kurzii* (Hook. f.) Corner) arose. *Allaeanthus kurzii* was reported in India from Assam and Arunachal Pradesh states and is very much localized in these two regions (KANJILAL & al., 1940; GRIERSON & al., 1983; BERG & al., 2006). HOOKER (1888) based *Allaeanthus kurzii* on four collections: "ASSAM, *Masters*; at Goalpara, *Clarke*. BURMA, *Griffith* (*Kew Distrib.* 4657). PEGU to TENASSERIM, *Kurz*". Out of these, the specimen from Burma (Myanmar), *Griffith* (*Kew Distrib.* 4657), is chosen as lectotype. Figures of the female parts of the plant, drawn on the sheet and on which the description evidently relies, support this choice.

Allaeanthus kurzii Hook. f., *Fl. Brit. India* 5: 490. 1888.

\equiv *Broussonetia kurzii* (Hook. f.) Corner in *Gard. Bull. Singapore* 19: 234. 1962.

Lectotypus (designated here): **MYANMAR (BURMA)**: Herbarium of the late East India Company, Birma, s.d., *Griffith* (*Kew Distrib.* 4657) [female plant] (K! [K0003 57622]) (Fig. 1).

The rest of the syntypes is kept at Central National Herbarium (CAL), Howrah.

Acknowledgements

We are thankful to the Director, Botanical Survey of India for providing the necessary facilities. We also thank the Board of Trustees, Royal Botanic Gardens, Kew for the permission to reproduce the image of the type specimen and the anonymous reviewer for his helpful suggestions.

References

- BERG, C. C., E. J. H. CORNER & F. M. JARRETT (2006). *Moraceae* (genera other than *Ficus*): *Broussonetia*. *Fl. Males.* ser. 1, 17(1): 29-33. Leiden.
- CORNER, E. J. H. (1962). The classification of *Moraceae*: *Broussonetia*. *Gard. Bull. Singapore* 19: 233-235.
- GRIERSON, A. J. C. & D. J. LONG (1983). *Moraceae*: *Broussonetia*. *Fl. Bhutan* 1: 101. Edinburgh.
- HOOKER, J. D. (1888). *Urticaceae*: *Allaeanthus*. *Fl. Brit. India* 5: 490-491. London.
- KANJILAL, U. N., P. C. KANJILAL, R. N. DE & A. DAS (1940). *Moraceae*: *Allaeanthus*. *Fl. Assam* 4: 275-276. Shillong.
- THWAITES, G. H. K. (1854). Descriptions of some new Genera and Species of Ceylon Plants: *Allaeanthus*. *Hooker's J. Bot. Kew Gard. Misc.* 6: 302-303, Fig. 9B.

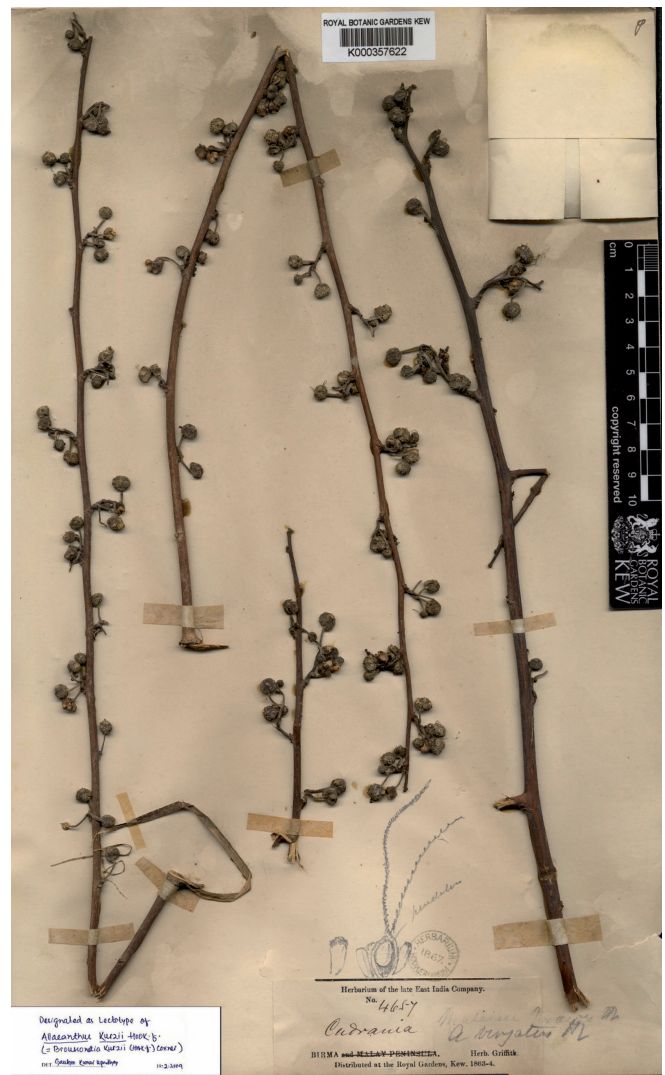


Fig. 1. – Lectotype of *Allaeanthus kurzii* Hook. f.

[*Griffith* (*Kew Distrib.* 4657), K] [© The Board of Trustees of the Royal Botanic Gardens, Kew. Reproduced with permission]